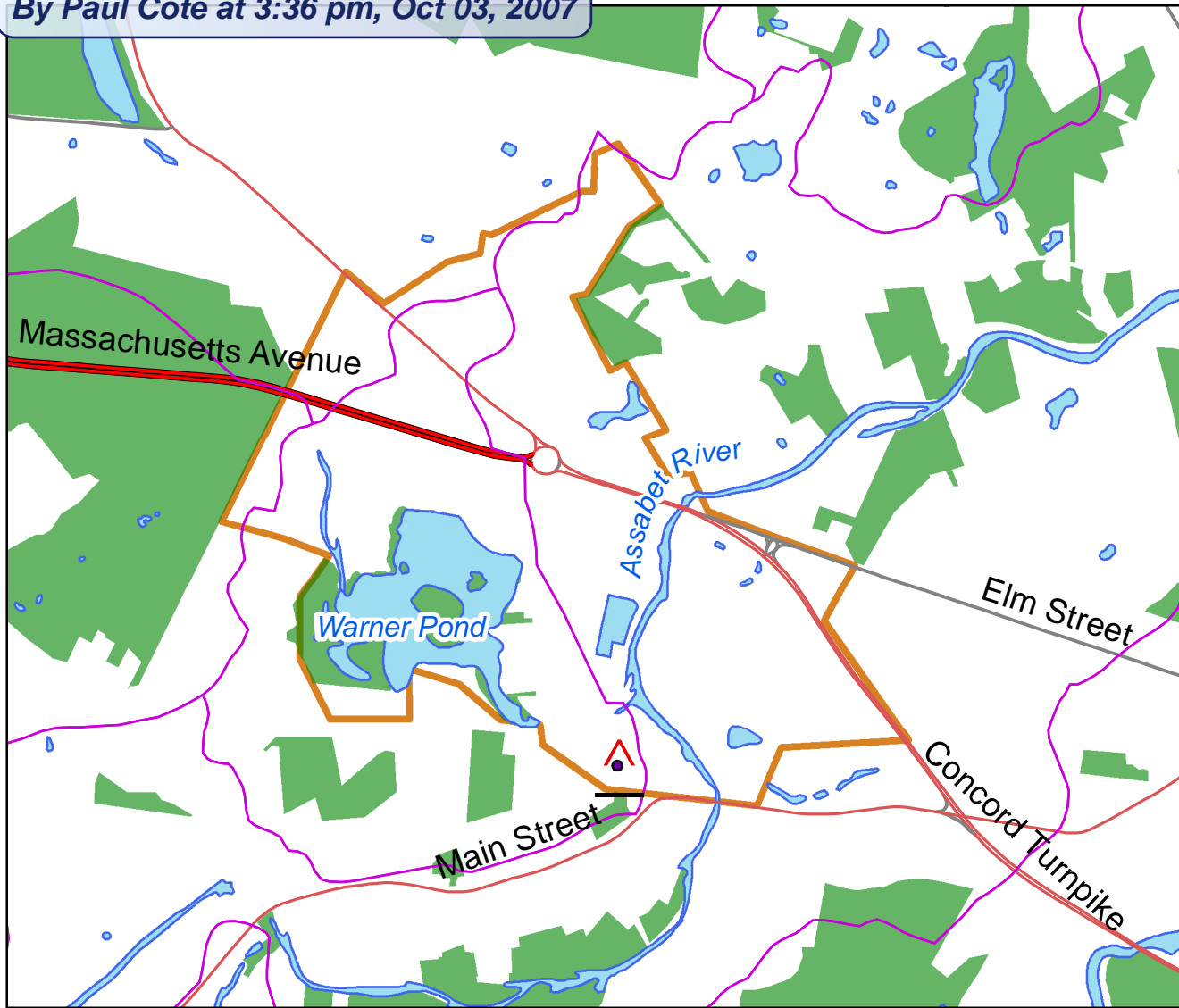


REVIEWED

By Paul Cote at 3:36 pm, Oct 03, 2007






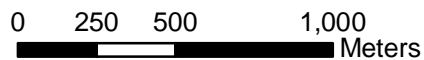
Context

My site is a two hectare area located near the southern border of our studio site in West Concord, Massachusetts. The area is close to the Assabet River, but is separated from it by a sub-basin divide that ultimately drains to Warner Pond. Main Street runs very close to the site, but it is a kilometer south of the main traffic circle.



Legend

-  Sub-basins
-  Open Space
-  Studio Boundary



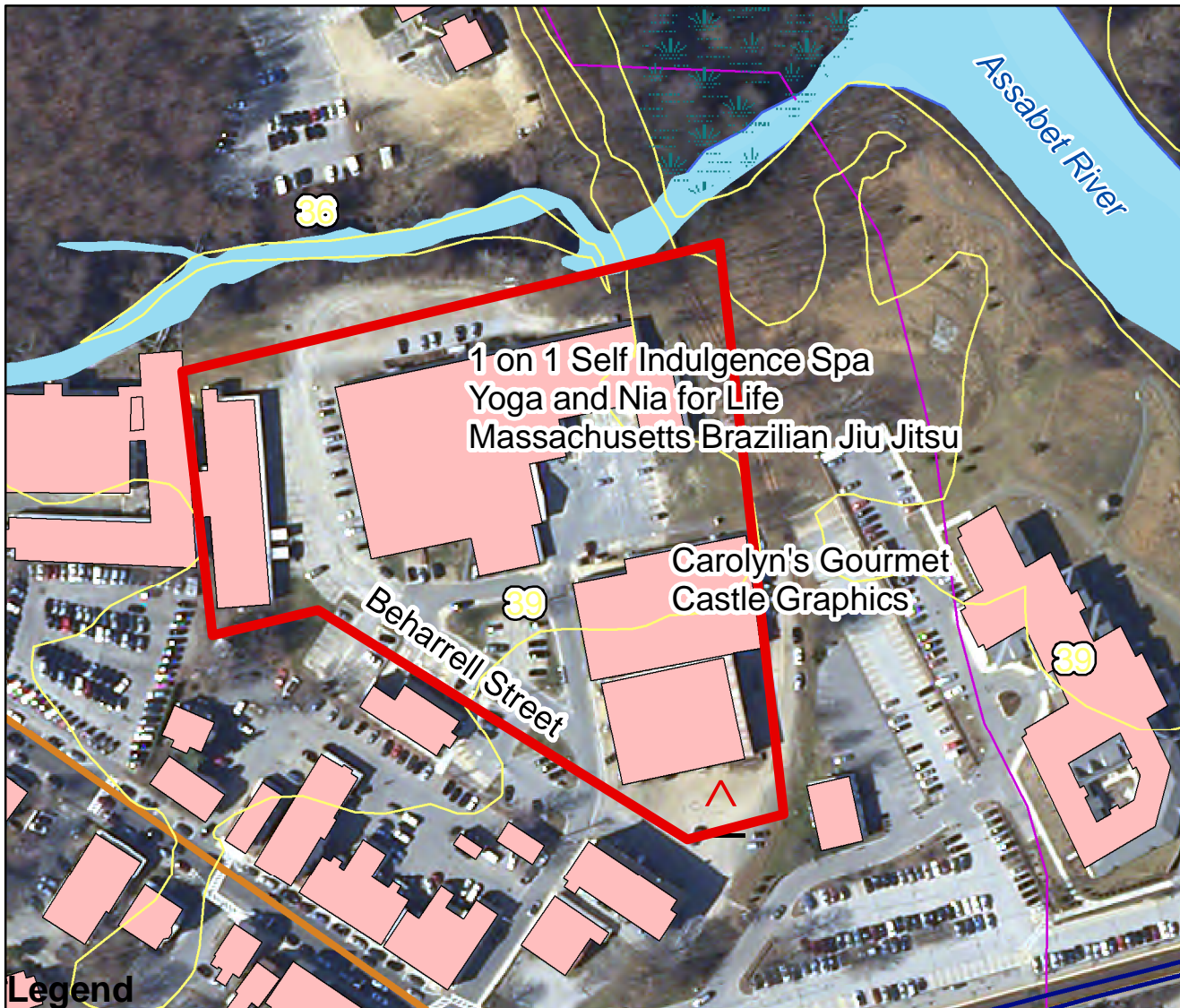
Sources:
Roads, Open Space, Sub-basins,
Water from Mass GIS

Projection:
Massachusetts State Plane Mainland

Katie Powell
GIS Assignment 2
Harvard GSD
September 2007

Topography

The site is a small area with a bakery, spa, yoga studio etc. One on One Self Indulgence Spa's website described their location as "off the beaten path in the 'Soho' of Concord." Train tracks run past the south-east corner and there is a wetland to the north. There is very little topographic change on the site making it well suited for the businesses it holds.



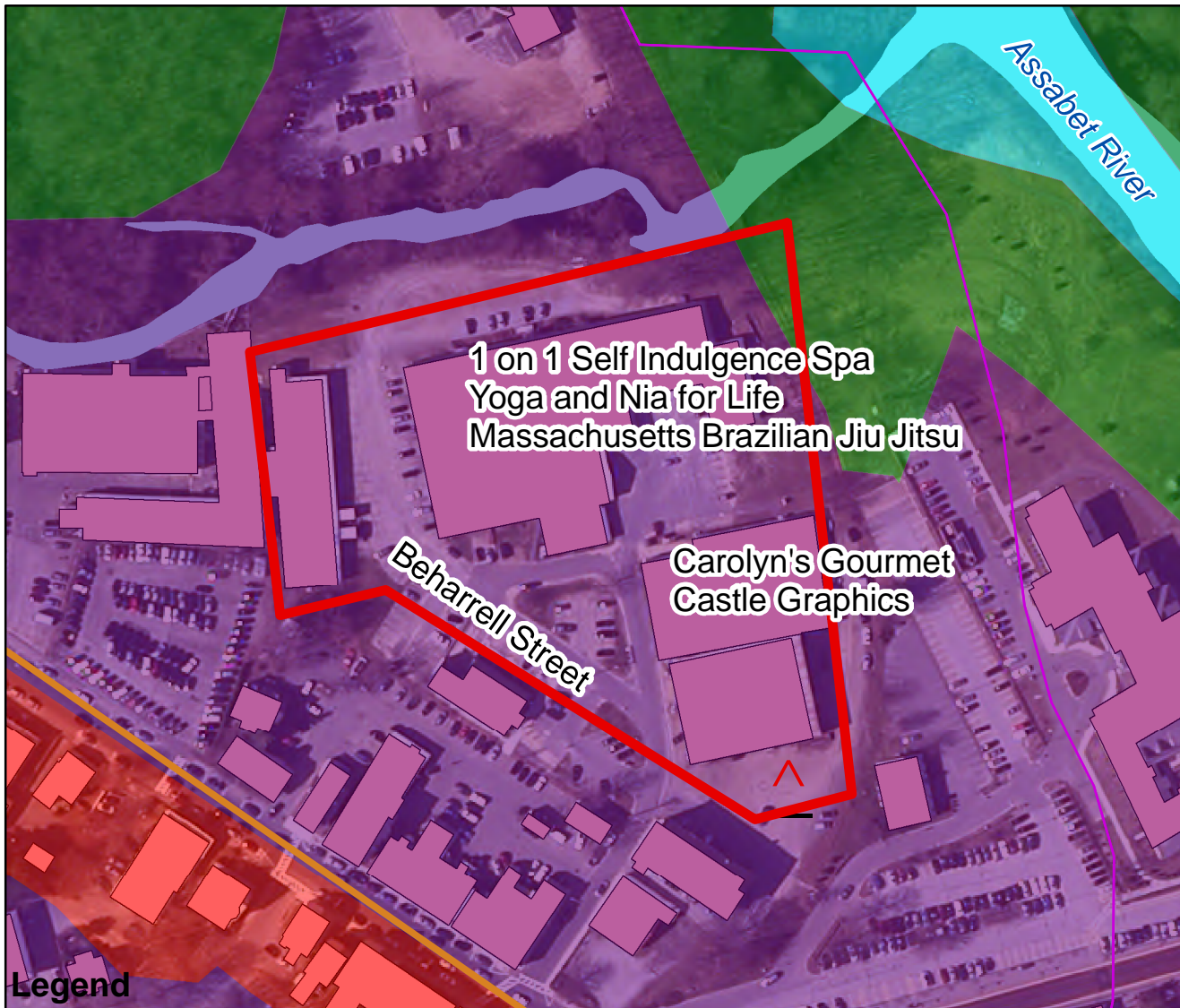
Sources:
2005 Aerial Photo, Trains, Wetlands,
Sub-basins, and Contours from Mass GIS
Buildings, Rivers and Ponds from Concord GIS

Projection:
Massachusetts State Plane Mainland

Katie Powell
GIS Assignment 2
Harvard GSD
September 2007

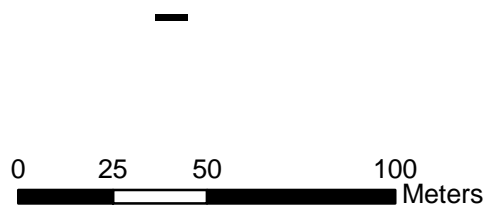
Land Use

The land use is predominantly described as industrial despite the small shops located within it. The site lies at the waters edge. The buffer zone protecting the stream is very small and is not even registered on the land use map, as the industrial description crosses unbroken over the water.



Legend

- Studio Boundary
- Sub-basins
- Forest
- Commercial
- Industrial
- Water
- Rivers and Ponds
- Buildings



Sources:
2005 Aerial Photo, Land Use, and Sub-basins from Mass GIS
Buildings, Rivers, and Ponds from Concord GIS

Projection:
Massachusetts State Plane Mainland

Katie Powell
GIS Assignment 2
Harvard GSD
September 2007

Soils

The soil is predominantly classified as urban, reflecting that the site is mostly paved. There are a few small roads leading onto the area; however, the roads do not pass through as they end in parking lots.



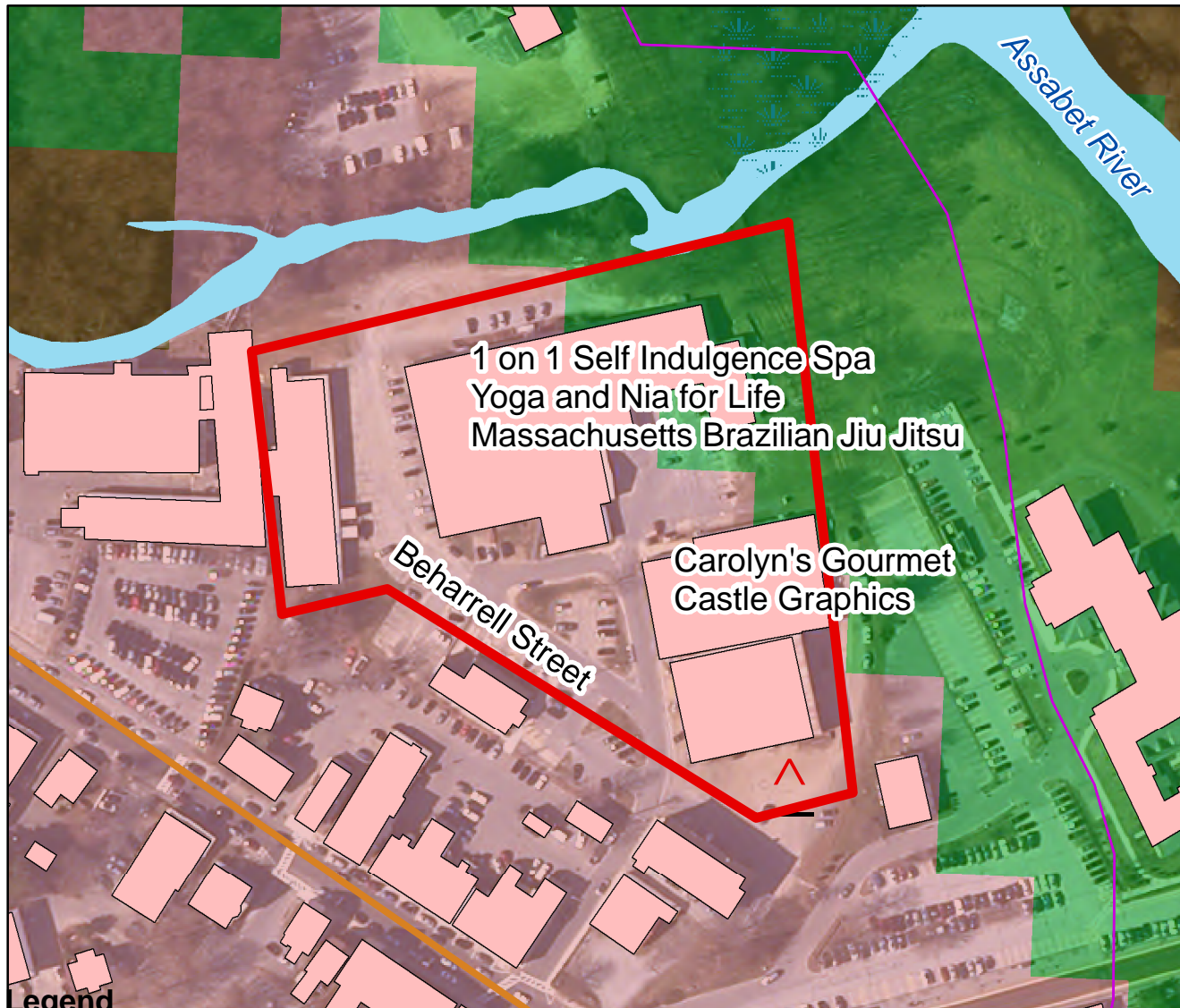
Sources:
2005 Aerial Photo, Land Use, and Sub-basins from Mass GIS
Buildings, Pavement Edges, Rivers and Ponds from Concord GIS

Projection:
Massachusetts State Plane Mainland

Katie Powell
GIS Assignment 2
Harvard GSD
September 2007

Vegetation

The vegetation on the site is classified as urban suggesting that it is composed of street trees, but even those seem rare on the site. The vegetation map is a very broad stroke classification and labels a large parking lot as wetland vegetation. However, the map does show that there is 15,000 square meters of green space to the north of the site, including the wetland.



Legend

-  Studio Boundary
-  Sub-basins
-  SHRUB SWAMP
-  Rivers and Ponds
-  Buildings
-  Nonforest cover
-  Palustrine Wetlands
-  Urban



Sources:
 2005 Aerial Photo, Land Use,
 Sub-basins, and Wetlands from Mass
 GIS
 Buildings, Rivers and Ponds from
 Concord GIS

Projection:

Katie Powell
 GIS Assignment 2
 Harvard GSD
 September 2007