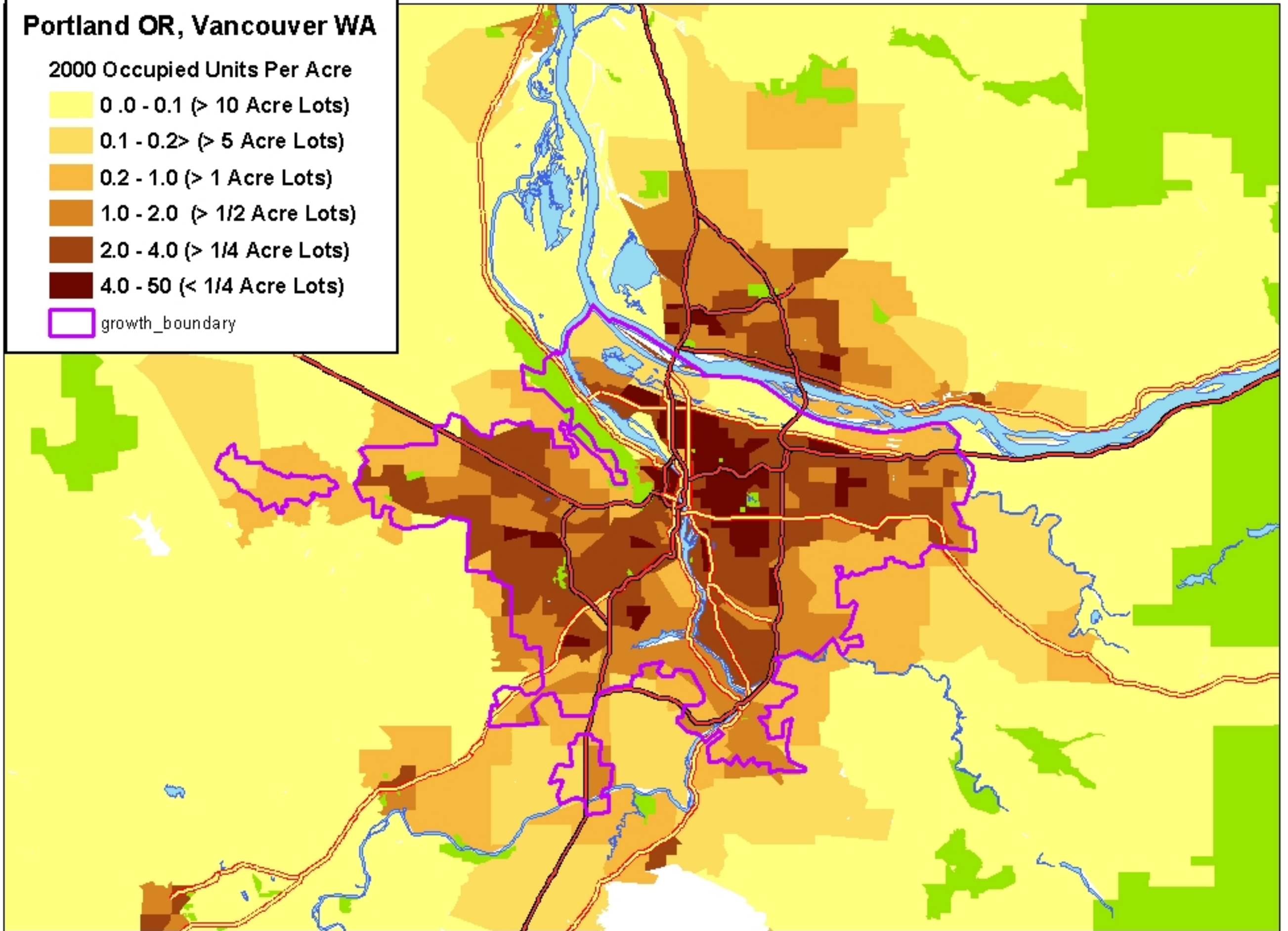


Hi There

Portland OR, Vancouver WA

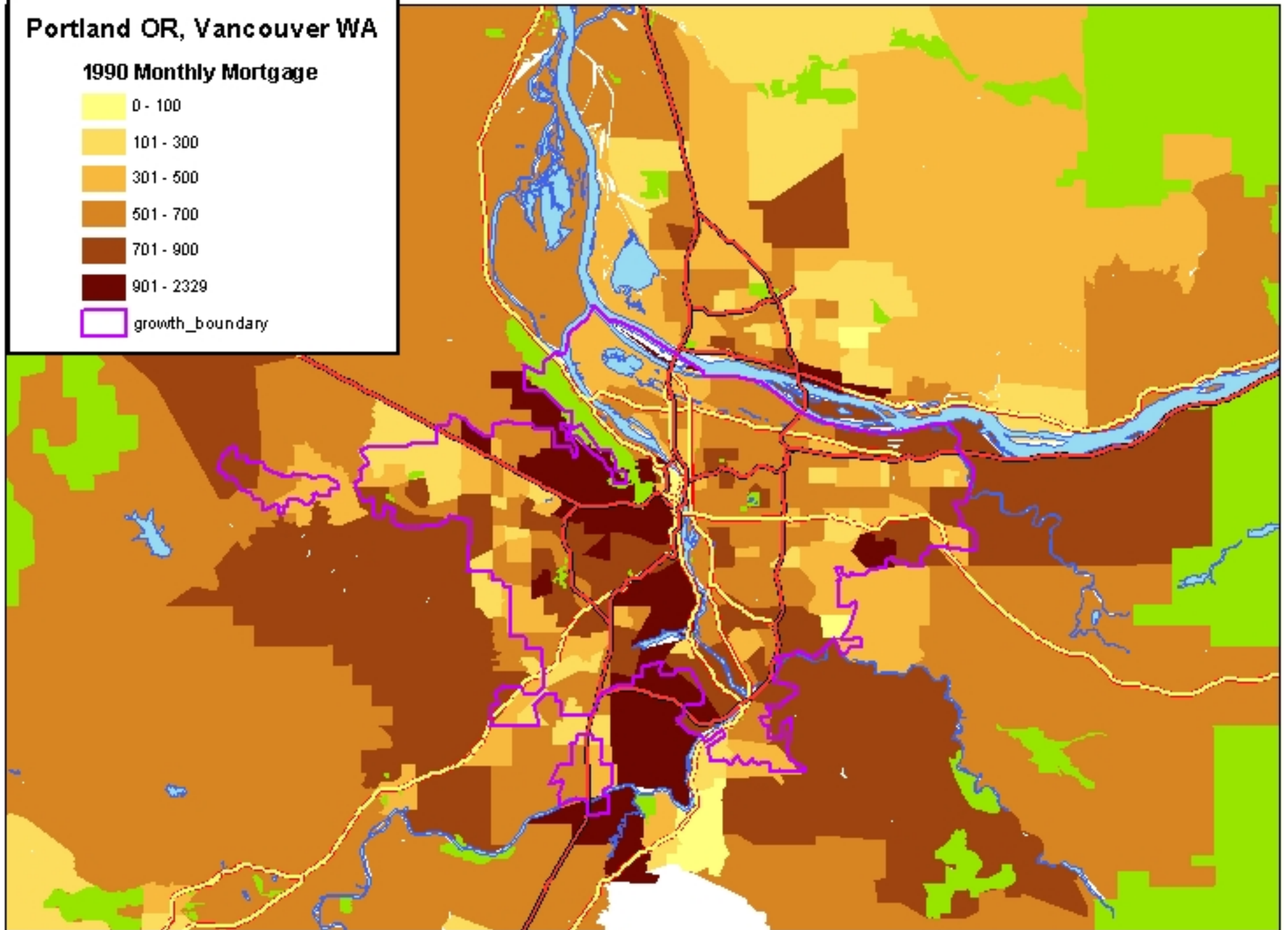
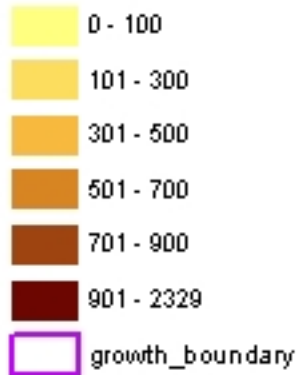
2000 Occupied Units Per Acre

- 0.0 - 0.1 (> 10 Acre Lots)
- 0.1 - 0.2 (> 5 Acre Lots)
- 0.2 - 1.0 (> 1 Acre Lots)
- 1.0 - 2.0 (> 1/2 Acre Lots)
- 2.0 - 4.0 (> 1/4 Acre Lots)
- 4.0 - 50 (< 1/4 Acre Lots)
- growth_boundary




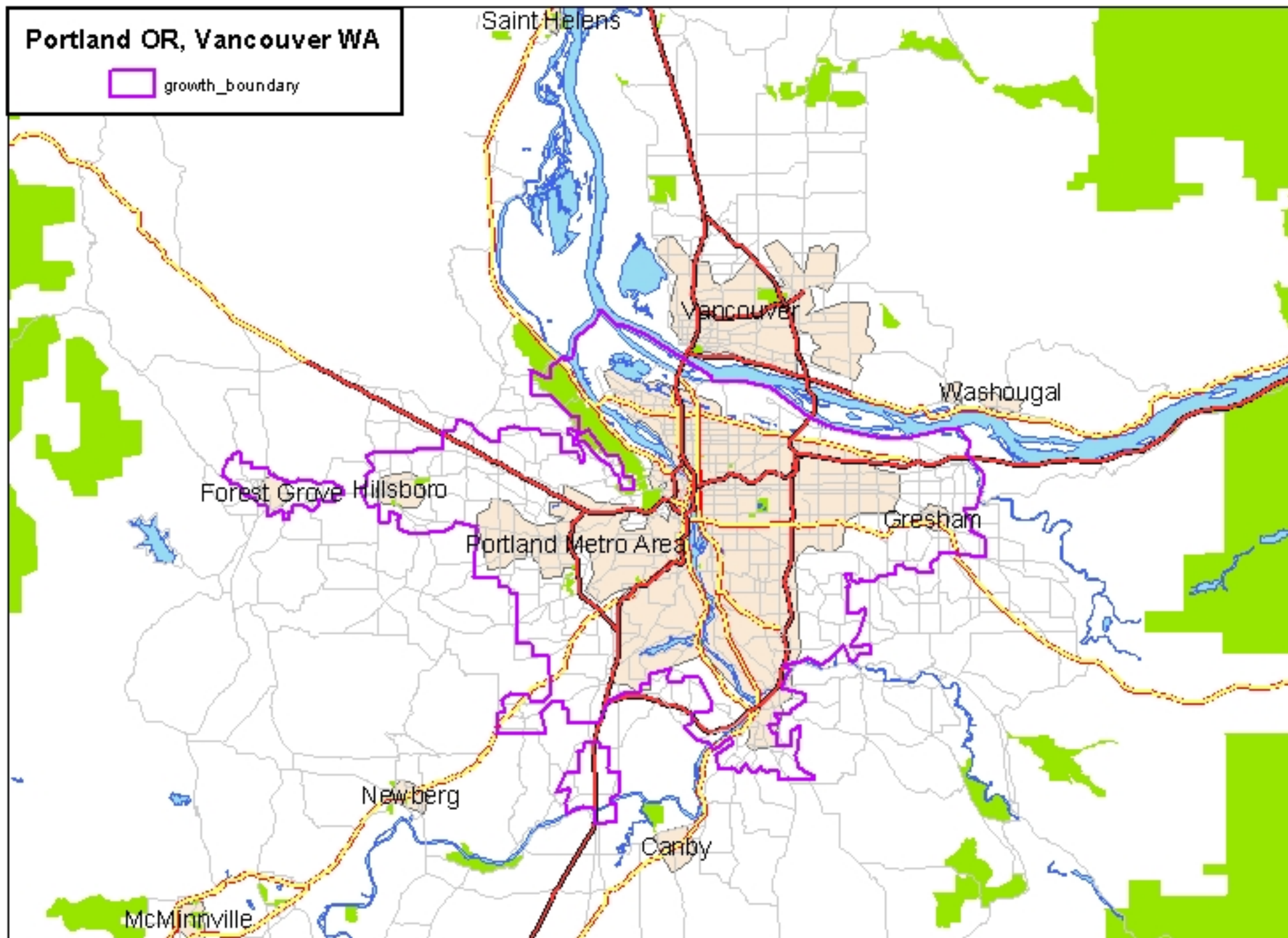
Portland OR, Vancouver WA

1990 Monthly Mortgage



Portland OR, Vancouver WA

 growth_boundary



Portland OR, Vancouver WA

1980 Occupied Units Per Acre

0.0 - 0.1 (> 10 Acre Lots)

0.1 - 0.2 (> 5 Acre Lots)

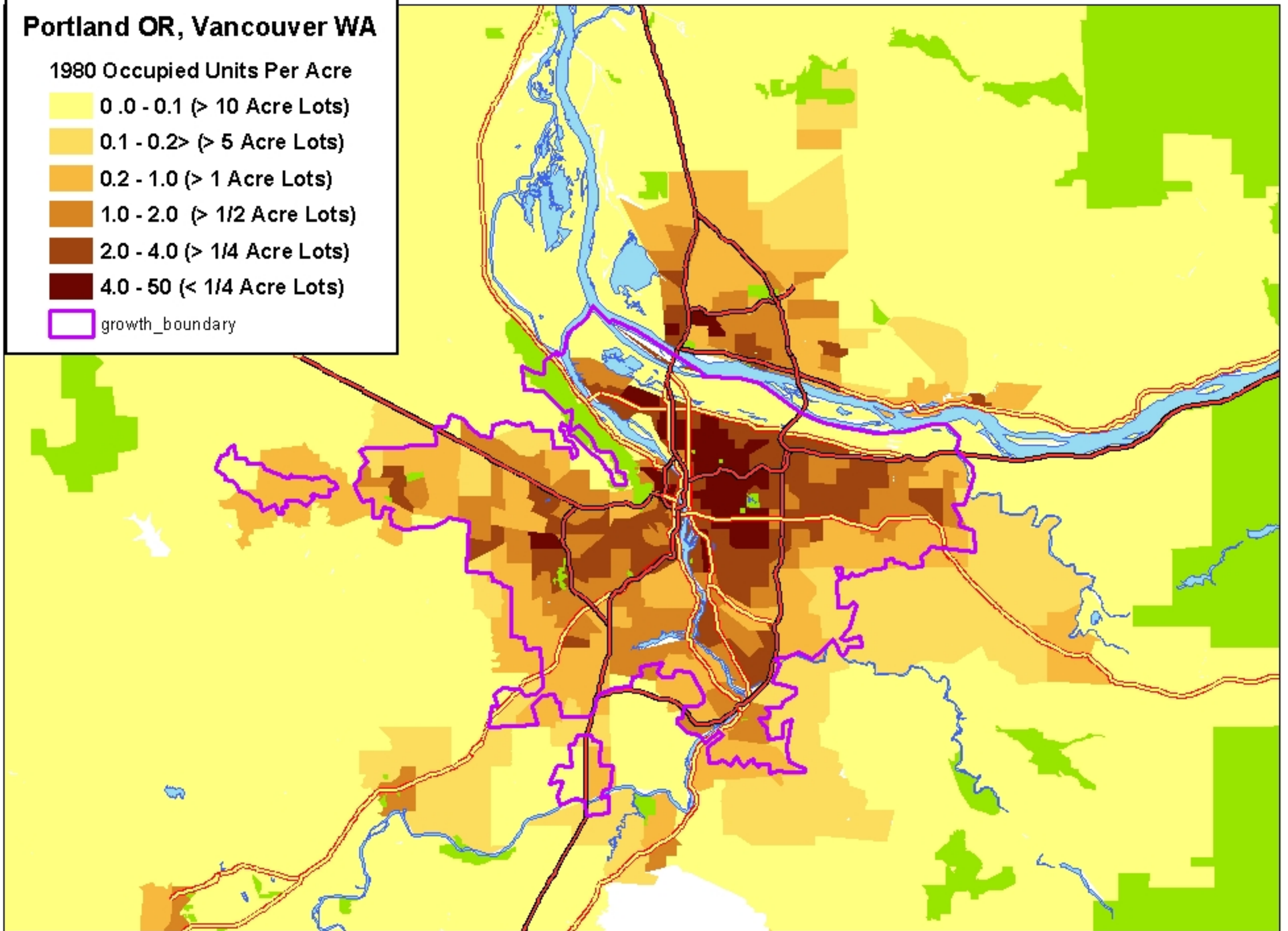
0.2 - 1.0 (> 1 Acre Lots)

1.0 - 2.0 (> 1/2 Acre Lots)

2.0 - 4.0 (> 1/4 Acre Lots)

4.0 - 50 (< 1/4 Acre Lots)

growth_boundary



Portland OR, Vancouver WA

1980 Monthly Mortgage adjusted

0 - 100

101 - 300

301 - 500

501 - 700

701 - 900

901 - 1412

growth_boundary

