

ScienceBase Cata... → National Geo... → The National ... → National Land... → National Land...  
→ NLCD 2001 P...

# NLCD 2001 Percent Tree Canopy, 3 x 3 Degree: NLCD2001\_CAN\_N42W069

[View ▾](#)

## Dates

**Publication Date :**

2003-09-01

**Start Date :**

1999-10-13

**End Date :**

2002-06-15

**File Modification Date :**

2017-11-14 16:40:00

## Citation

U.S. Geological Survey, 20030901, NLCD 2001 Percent Tree Canopy, 3 x 3 Degree:  
NLCD2001\_CAN\_N42W069: U.S. Geological Survey.

## Summary

The National Land Cover Database 2001 tree canopy layer was produced through a cooperative project conducted by the Multi-Resolution Land Characteristics (MRLC) Consortium. The MRLC Consortium is a partnership of federal agencies ([www.mrlc.gov](http://www.mrlc.gov)), consisting of the U.S. Geological Survey (USGS), the National Oceanic and Atmospheric Administration (NOAA), the U.S. Environmental Protection Agency (EPA), the U.S. Department of Agriculture (USDA), the U.S. Forest Service (USFS), the National Park Service (NPS), the U.S. Fish and Wildlife Service (FWS), the Bureau of Land Management (BLM) and the USDA Natural Resources Conservation Service (NRCS). One of the primary goals of the project is to generate a current, consistent, seamless, and [...]

## Contacts

**Point of Contact :**

U.S. Geological Survey (</catalog/catalogParty/show?partyId=U.S.+Geological+Survey>)

**Process Contact :**

MDA Federal, Inc. (</catalog/catalogParty/show?partyId=MDA+Federal%2C+Inc.>), U.S. Geological Survey  
(</catalog/catalogParty/show?partyId=U.S.+Geological+Survey>)

**Originator :**

U.S. Geological Survey (</catalog/catalogParty/show?partyId=U.S.+Geological+Survey>)

**Metadata Contact :**

U.S. Geological Survey (</catalog/catalogParty/show?partyId=U.S.+Geological+Survey>)

**Publisher :**

U.S. Geological Survey (/catalog/catalogParty/show?partyId=U.S.+Geological+Survey)

**Distributor :**

U.S. Geological Survey (/catalog/catalogParty/show?partyId=U.S.+Geological+Survey)

## Attached Files

Click on title to download individual files attached to this item.

 NLCD2001_CAN_N42W069.xml <i>Original FGDC Metadata</i>	 View	20.83 KB
---	---	----------

## Related External Resources

### Type: Online Link

Web Link	<a href="https://s3-us-west-2.amazonaws.com/prd-tnm/StagedProducts/NLCD/data/2001/canopy/3x3/NLCD2001_CAN_N42W069.zip">https://s3-us-west-2.amazonaws.com/prd-tnm/StagedProducts/NLCD/data/2001/canopy/3x3/NLCD2001_CAN_N42W069.zip</a> ( <a href="https://s3-us-west-2.amazonaws.com/prd-tnm/StagedProducts/NLCD/data/2001/canopy/3x3/NLCD2001_CAN_N42W069.zip">https://s3-us-west-2.amazonaws.com/prd-tnm/StagedProducts/NLCD/data/2001/canopy/3x3/NLCD2001_CAN_N42W069.zip</a> )
Web Link	<a href="https://viewer.nationalmap.gov/">https://viewer.nationalmap.gov/</a> ( <a href="https://viewer.nationalmap.gov/">https://viewer.nationalmap.gov/</a> )

### Type: browseImage

Tiled NLCD Browse Image	<a href="https://s3-us-west-2.amazonaws.com/prd-tnm/StagedProducts/NLCD/browse/2001/canopy/3x3/NLCD2001_CAN_N42W069.jpg">https://s3-us-west-2.amazonaws.com/prd-tnm/StagedProducts/NLCD/browse/2001/canopy/3x3/NLCD2001_CAN_N42W069.jpg</a> ( <a href="https://s3-us-west-2.amazonaws.com/prd-tnm/StagedProducts/NLCD/browse/2001/canopy/3x3/NLCD2001_CAN_N42W069.jpg">https://s3-us-west-2.amazonaws.com/prd-tnm/StagedProducts/NLCD/browse/2001/canopy/3x3/NLCD2001_CAN_N42W069.jpg</a> )
-------------------------	---

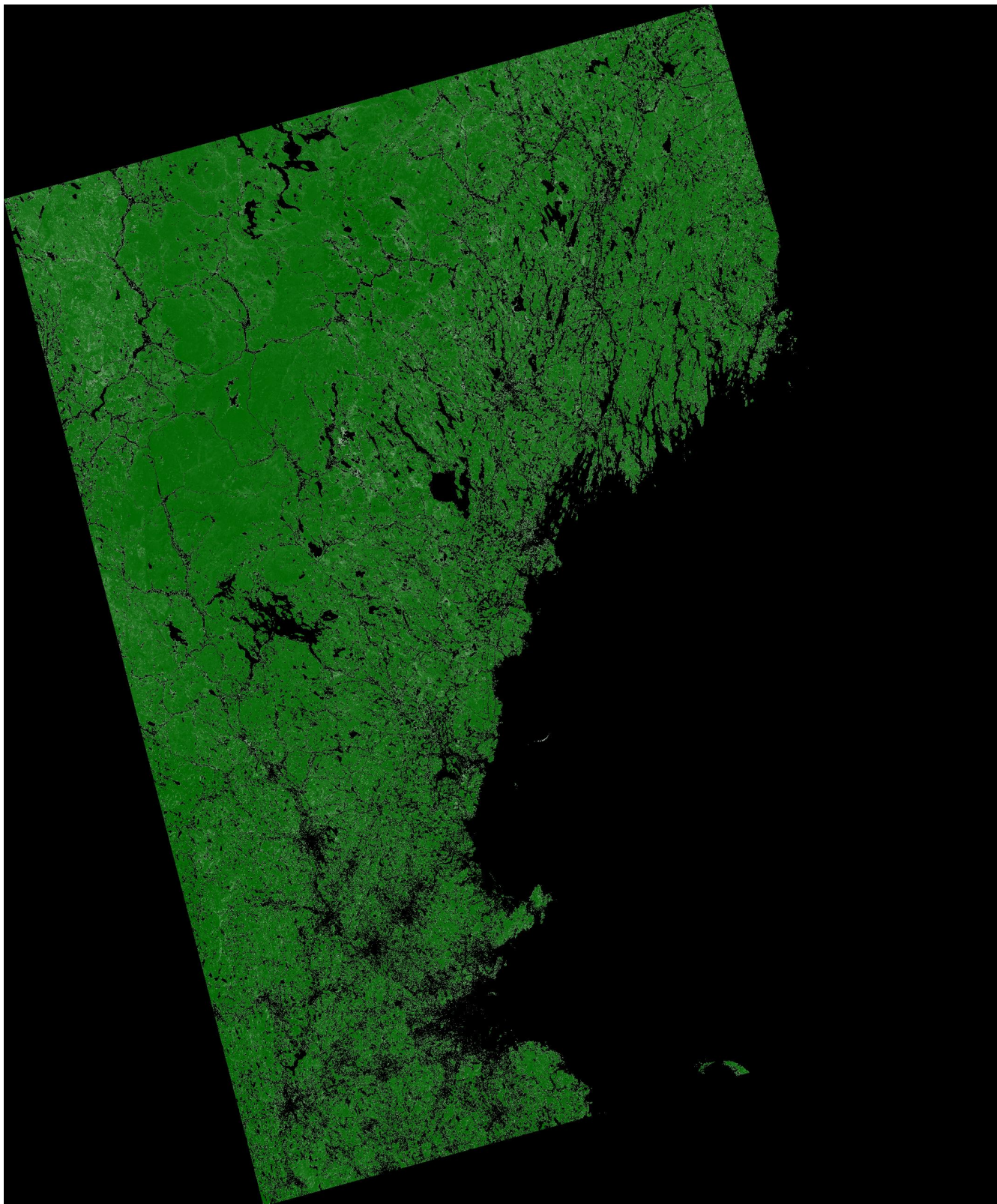
### Type: download

TIFF	<a href="https://s3-us-west-2.amazonaws.com/prd-tnm/StagedProducts/NLCD/data/2001/canopy/3x3/NLCD2001_CAN_N42W069.zip">https://s3-us-west-2.amazonaws.com/prd-tnm/StagedProducts/NLCD/data/2001/canopy/3x3/NLCD2001_CAN_N42W069.zip</a> ( <a href="https://s3-us-west-2.amazonaws.com/prd-tnm/StagedProducts/NLCD/data/2001/canopy/3x3/NLCD2001_CAN_N42W069.zip">https://s3-us-west-2.amazonaws.com/prd-tnm/StagedProducts/NLCD/data/2001/canopy/3x3/NLCD2001_CAN_N42W069.zip</a> )
------	---

## Purpose

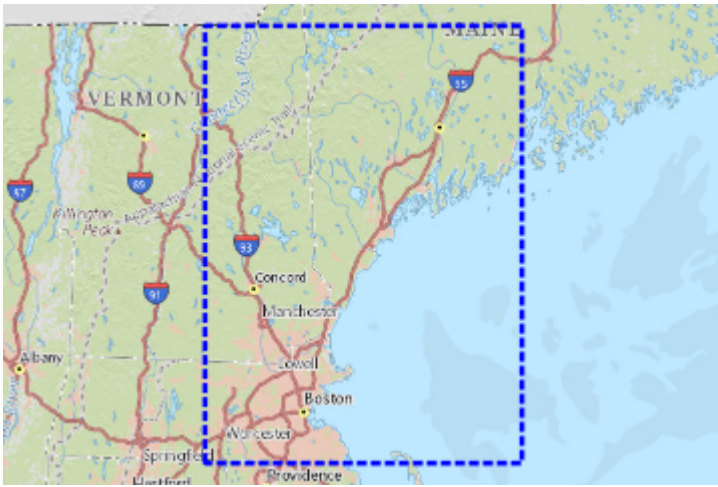
The goal of this project is to provide the Nation with complete, current and consistent public domain information on its land use and land cover.

## Preview Image



Tiled NLCD Browse Image

Map » (</catalog/item/imap/5a1c65c5e4b09fc93dd64b74>)



(/catalog/item/imap/5a1c65c5e4b09fc93dd64b74)

## Communities

- National Geospatial Program
- The National Map \*

## Tags

**Theme :** 010 (/catalog/items?q=&filter=tags%3D010), 3 x 3 degree (/catalog/items?q=&filter=tags%3D3+x+3+degree), Downloadable Data (/catalog/items?q=&filter=tags%3DDownloadable+Data), GIS (/catalog/items?q=&filter=tags%3DGIS), GeoTIFF (/catalog/items?q=&filter=tags%3DGeoTIFF), Land Cover (/catalog/items?q=&filter=tags%3DLand+Cover), Land Use Land Cover Theme (/catalog/items?q=&filter=tags%3DLand+Use+Land+Cover+Theme), NGDA (/catalog/items?q=&filter=tags%3DNGDA), National Geospatial Data Asset (/catalog/items?q=&filter=tags%3DNational+Geospatial+Data+Asset), National Land Cover Database (NLCD) - 2001 (/catalog/items?q=&filter=tags%3DNational+Land+Cover+Database+%28NLCD%29+-+2001), U.S. Geological Survey (/catalog/items?q=&filter=tags%3DU.S.+Geological+Survey), USGS (/catalog/items?q=&filter=tags%3DUSGS), digital spatial data (/catalog/items?q=&filter=tags%3Ddigital+spatial+data), imageryBaseMapsEarthCover (/catalog/items?q=&filter=tags%3DimageryBaseMapsEarthCover), tree canopy (/catalog/items?q=&filter=tags%3Dtree+canopy)

**Place :** U.S. (/catalog/items?q=&filter=tags%3DU.S.), US (/catalog/items?q=&filter=tags%3DUS), United States (/catalog/items?q=&filter=tags%3DUnited+States)

## Provenance

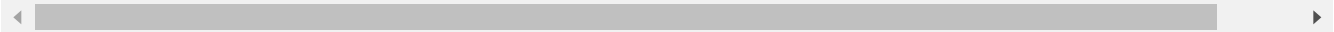
**Data source :** Link Processing

## Additional Information

### Identifiers

Type	Scheme	Key
id	gda	7550281

Type	Scheme	Key
	processingUrl	https://thor-f5.er.usgs.gov/ngtoc/metadata/waf/nlcd/2001/canopy/3x3/NLCD2001_CAN_N42W069



## Item Actions

View Item as ...

JSON (/catalog/item/5a1c65c5e4b09fc93dd64b74?format=json)

ATOM (/catalog/item/5a1c65c5e4b09fc93dd64b74?format=atom)

ISO XML (/catalog/item/5a1c65c5e4b09fc93dd64b74?format=isohtml)

Save Item as ...

JSON (/catalog/item/download/5a1c65c5e4b09fc93dd64b74?format=json)

FGDC (/catalog/item/download/5a1c65c5e4b09fc93dd64b74?format=fgdc)

MODS XML (/catalog/item/download/5a1c65c5e4b09fc93dd64b74?format=modsxml)

ISO XML (/catalog/item/download/5a1c65c5e4b09fc93dd64b74?format=iso)

View Item...

Metrics (/catalog/item/metrics/5a1c65c5e4b09fc93dd64b74)

---

U.S. Department of the Interior (<http://www.doi.gov/>)

U.S. Geological Survey (<http://www.usgs.gov/>)

Contact: [sciencebase@usgs.gov](mailto:sciencebase@usgs.gov) (<mailto:sciencebase@usgs.gov>)

Modified: Monday, November 26, 2018

App Version: 2.160.1

---